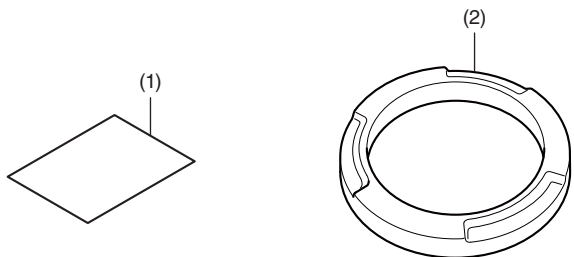


**Honda Dealer: Please give a copy of these instructions to your customer.**

## PARTS LIST



No.	Description	Qty
(1)	Installation Instruction URL	1
(2)	Left engine case ring	1

## SUPPLIES REQUIRED

Isopropyl alcohol  
Shop towel

## INSTALLATION

### ▲ CAUTION

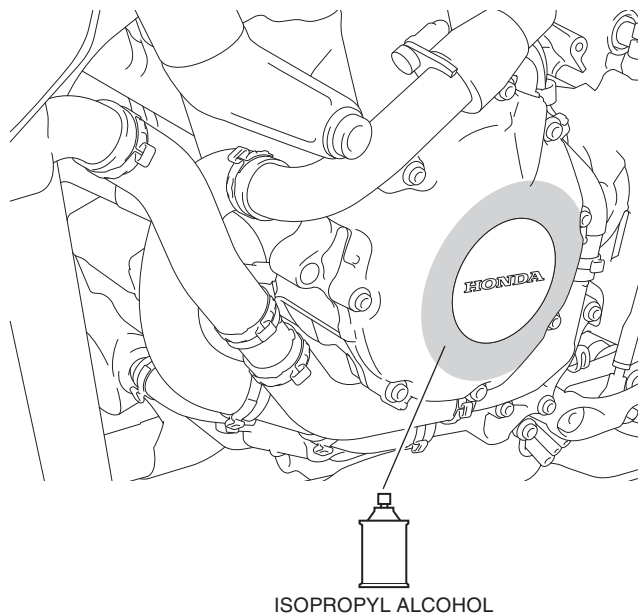
- To prevent burns, allow the engine, exhaust system, radiator, etc., to cool before installing the accessory.

### NOTE:

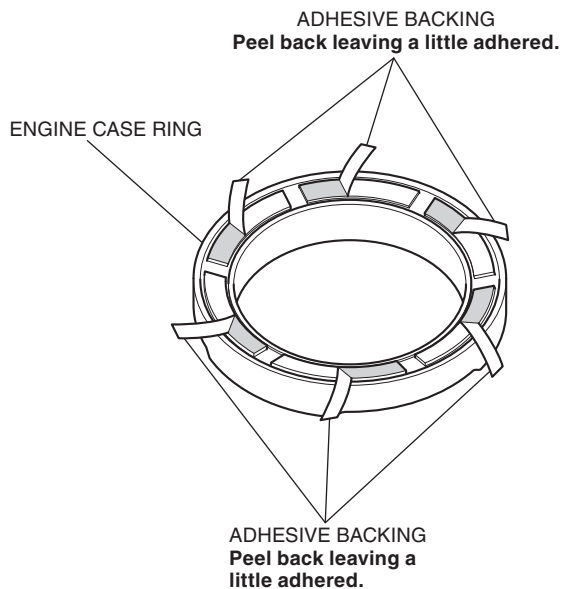
- Heat the bonding surfaces with a hair dryer if the ambient air temperature is below 70°F (21°C).
- The adhesive reaches full strength in 72 hours. Wait at least 24 hours before riding your motorcycle.

- Clean the surface of the left engine cover shown using isopropyl alcohol.

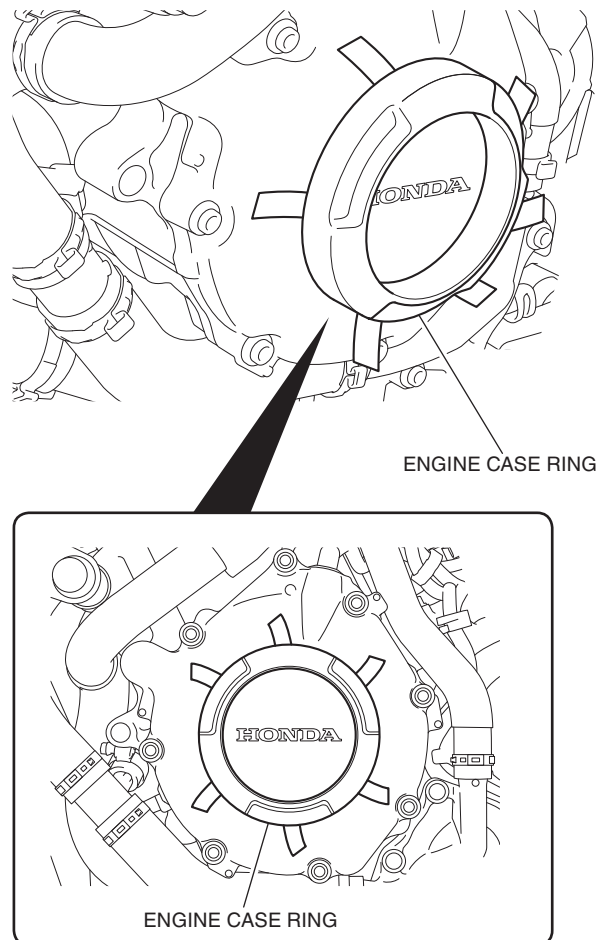
<Left side>



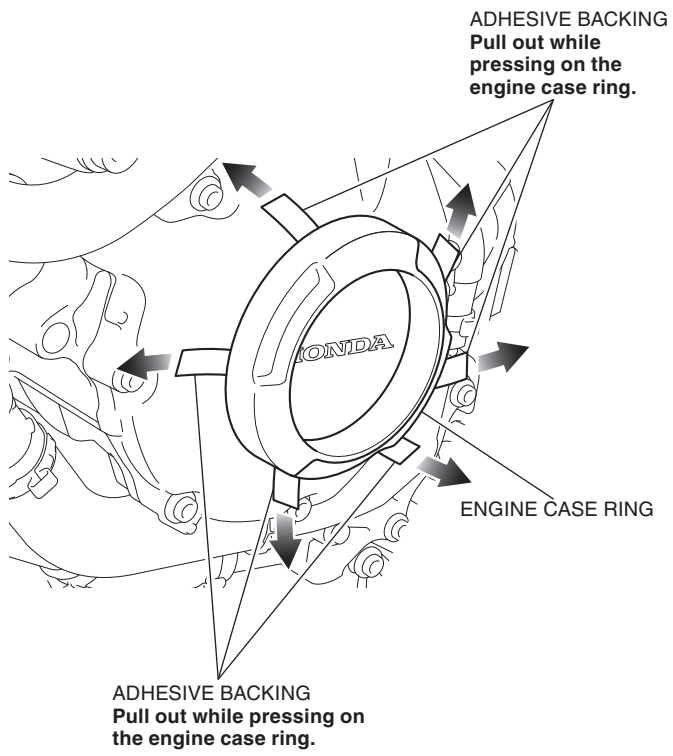
- Peel off the adhesive backing on the engine case ring as shown.



- Attach the engine case ring as shown.



4. Remove the adhesive backing as shown.



5. Apply adequate pressure to engine case ring.