



INSTALLATION INSTRUCTIONS

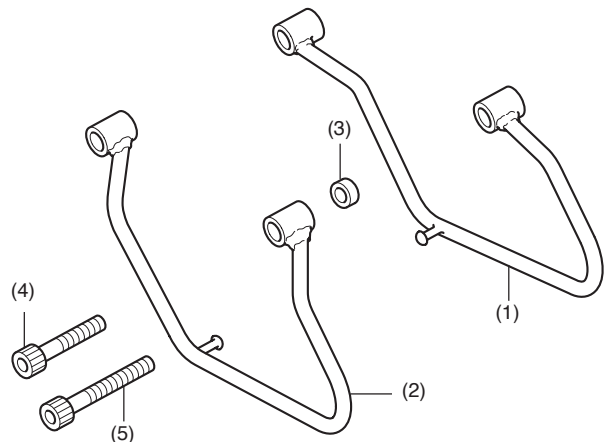
Accessory
CHROME SADDLEBAG SUPPORTS KIT
 P/N 08L56-MEG-100J

Application
 '08~ VT750C
 VT750C2B

Publications No.
MII 12987
 Issue Date
September 2009

Honda Dealer: Please give a copy of these instructions to your customer.

PARTS LIST

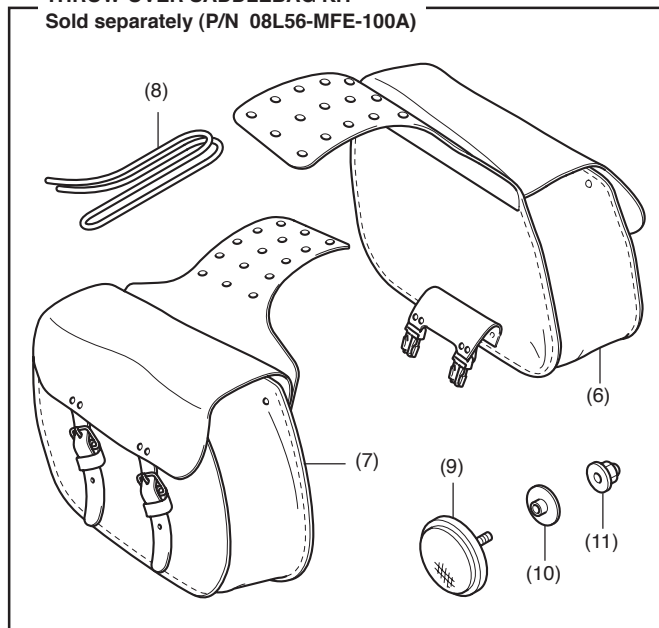


- The chrome saddlebag supports cannot be installed when the motorcycle is equipped with the seat trim rail and solo rider rear carrier.

No.	Description	Qty
(1)	Right support rod	1
(2)	Left support rod	1
(3)	Collar	6
(4)	10 mm socket bolt (short)	2
(5)	10 mm socket bolt (long)	2

THROW-OVER SADDLEBAG KIT

Sold separately (P/N 08L56-MFE-100A)



No.	Description	Qty
(6)	Right saddlebag	1
(7)	Left saddlebag	1
(8)	Leather strap	1
(9)	Reflector	2
(10)	Flange collar	2
(11)	6 mm cap nut	2

TOOLS AND SUPPLIES REQUIRED

Hex wrench (8 mm)
 Electric drill motor
 Drill bit (8.5 mm)
 Ruler
 Lubricant
 Torque wrench

TORQUE CHART

Tighten all screws, bolts, and nuts to their specified torque values. Refer to the Service Manual for the torque values of the removed parts.

Item	N-m	kgf-m	lbf-ft
6 mm cap nut	12	1.2	9
10 mm socket bolt	34	3.5	25

USE AND CARE INFORMATION

Cargo weight alone should not exceed:

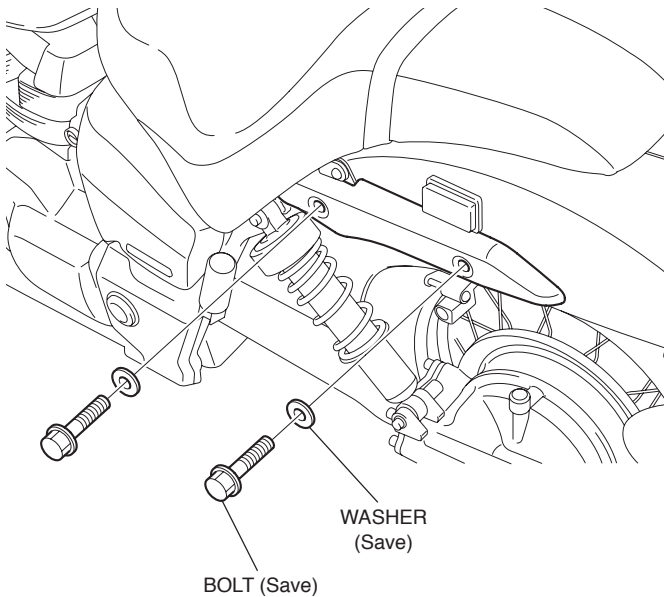
Right saddlebag	6.5 lbs (3.0 kg)
Left saddlebag	6.5 lbs (3.0 kg)

- The throw-over saddlebags are designed to be used with the saddlebag support kit. Failure to use the support kit with the saddlebags can damage the motorcycle and/or saddlebags.
- If the bags become completely wet (water has soaked through the material), they must be dried at room temperature.
Never dry the bags in a dryer, in front of a heater, or near a fireplace. When allowing the bags to dry, stuff them with newspaper so they retain their shape. Allow two to three days for the bags to dry completely.
- Check the accessory mounts frequently and retighten if necessary.

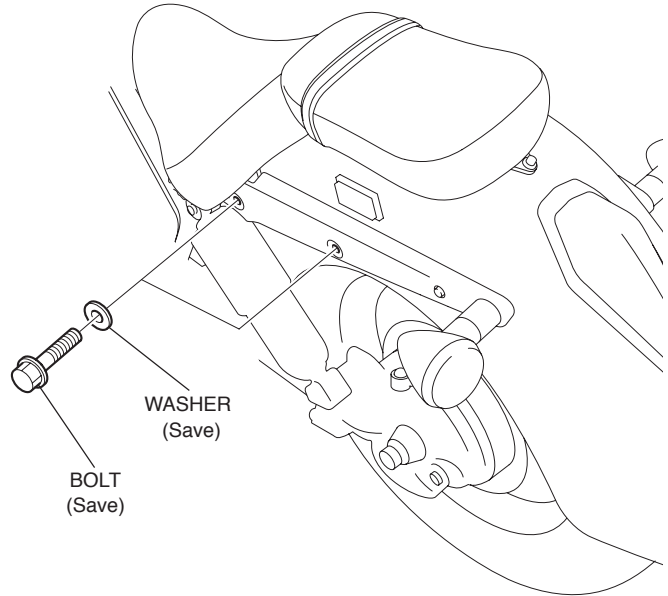
INSTALLATION

1. Remove the parts as shown.

VT750C2B

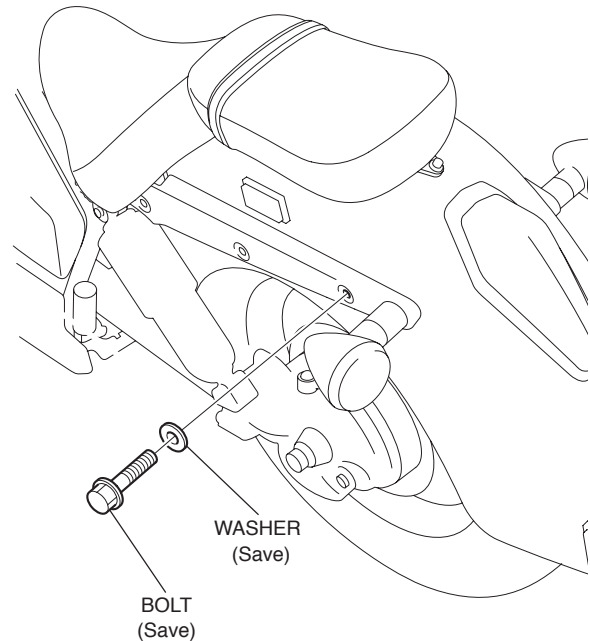


'08~ VT750C

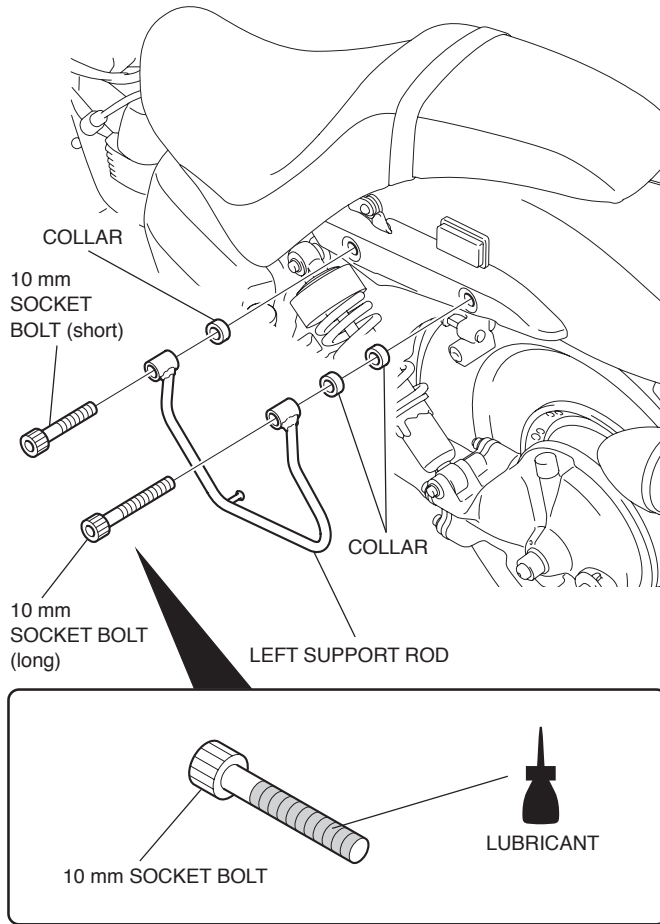


2. Remove the parts as shown.

- **Perform this procedure when installing the backrest stay and the rear fender rail on model '08~ VT750C.**

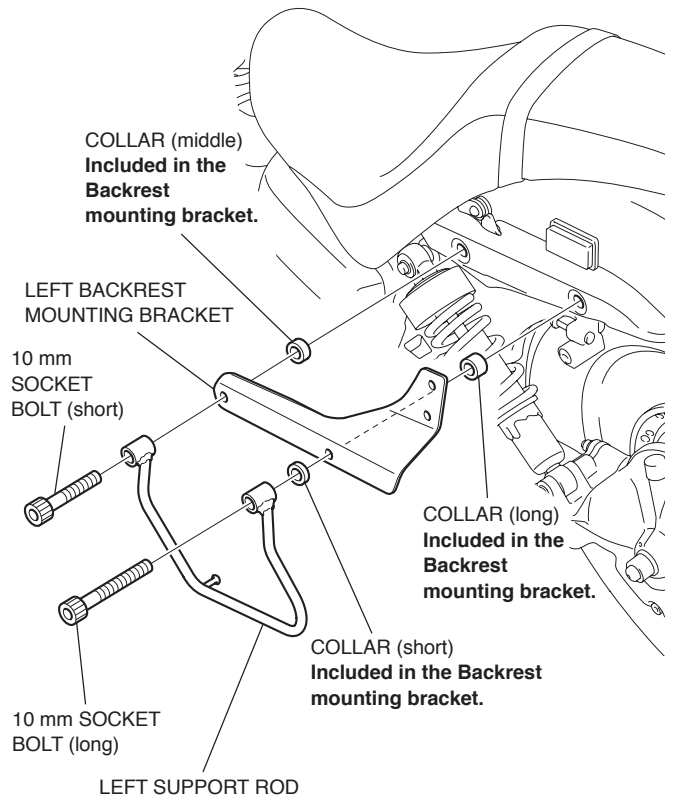


3. Install the left support rod as shown.



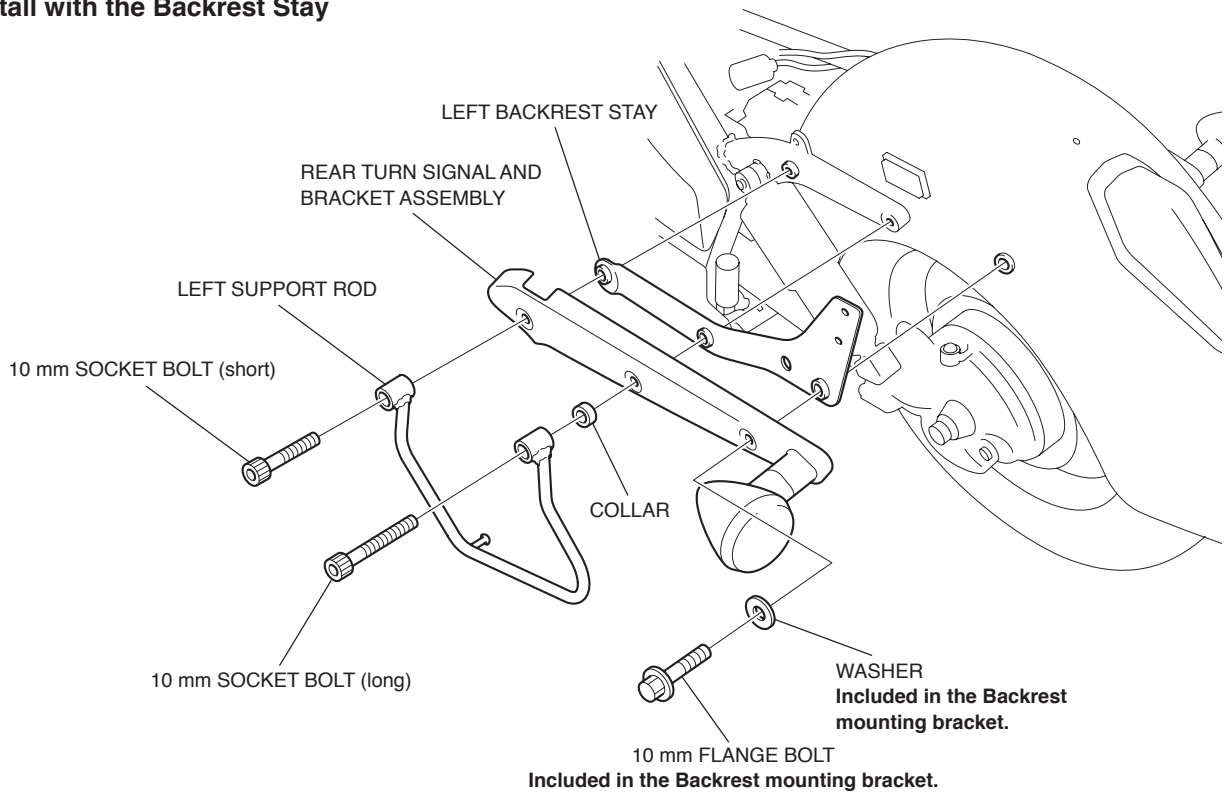
VT750C2B

To Install with the Backrest Mounting Bracket

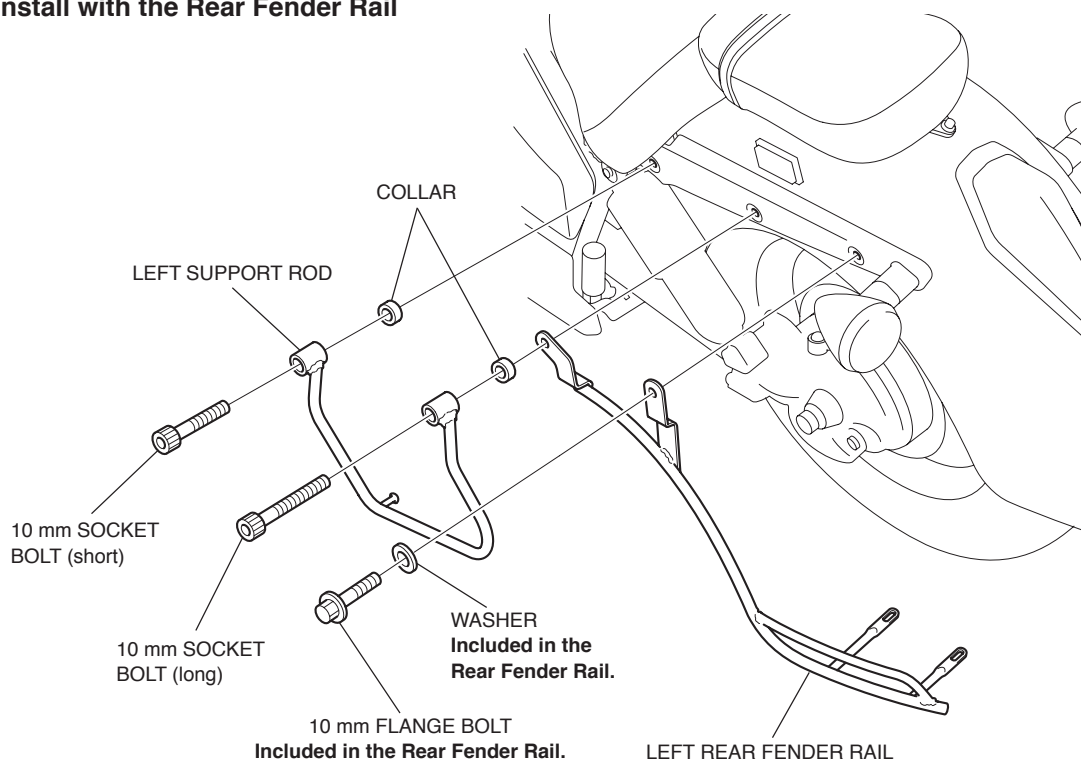


'08~ VT750C

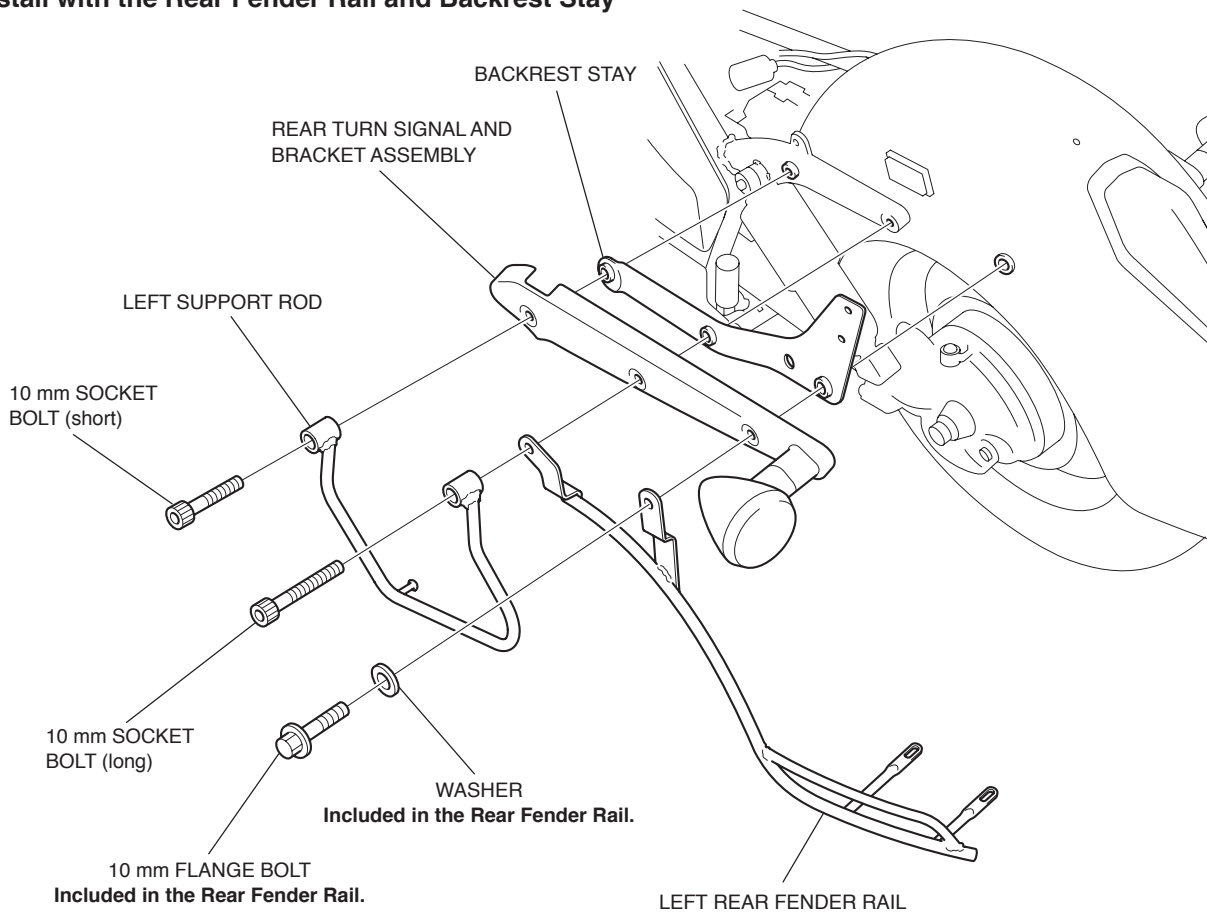
To Install with the Backrest Stay



To Install with the Rear Fender Rail

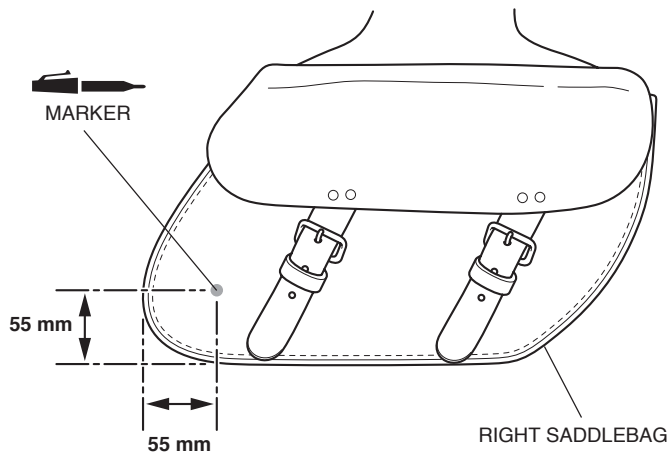


To Install with the Rear Fender Rail and Backrest Stay

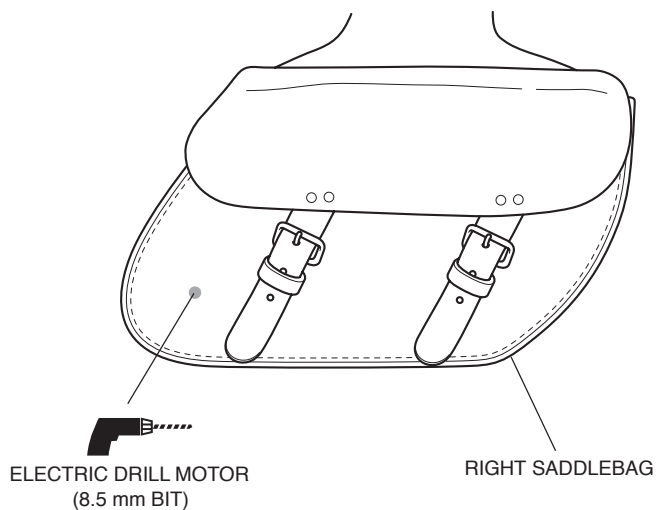


4. Repeat on the right side.

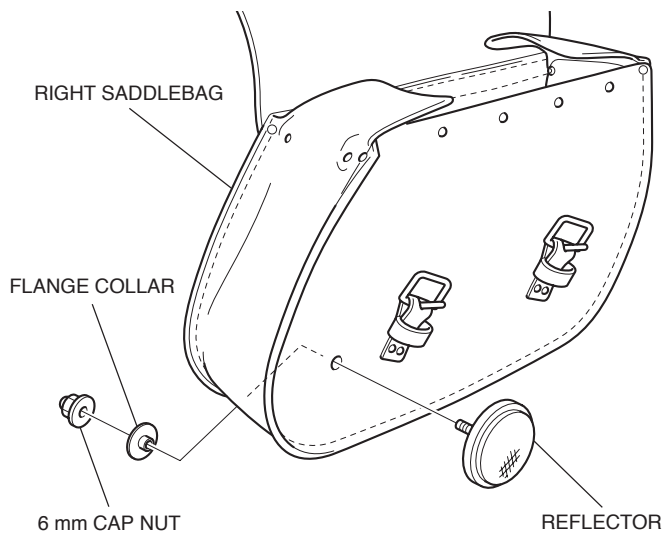
5. Using a ruler and a marker, measure and mark the saddlebag as shown.



6. Using an electric drill motor and drill bit, drill a 8.5 mm hole through each of the marks you just made.

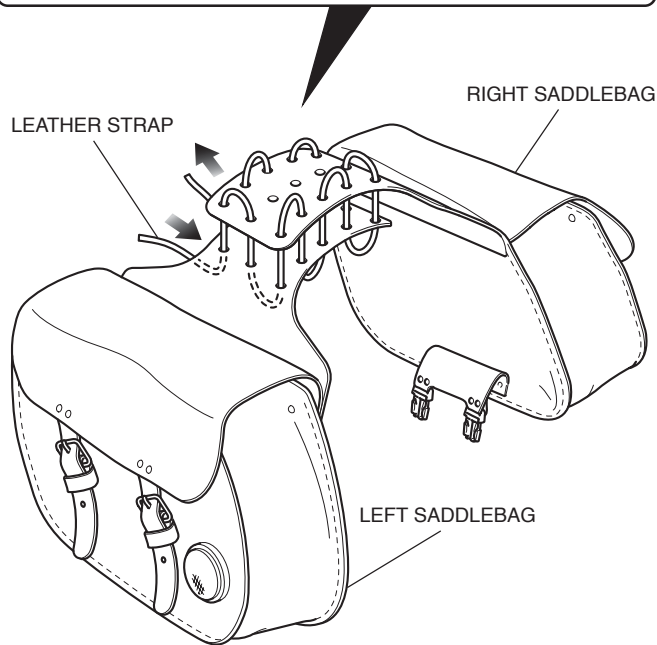
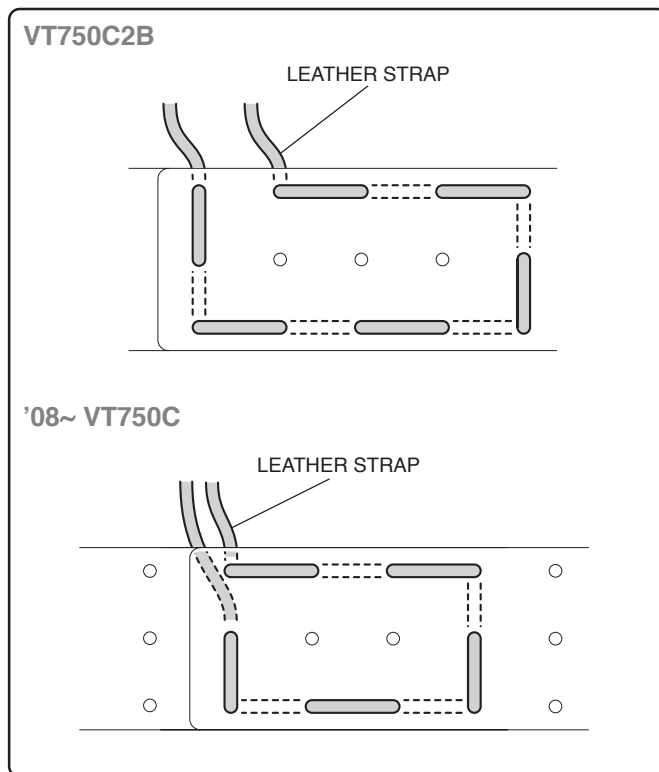


7. Install the reflector on the right saddlebag as shown.



8. Repeat on the left side.

9. Tie the right and left saddlebag together using the leather strap.



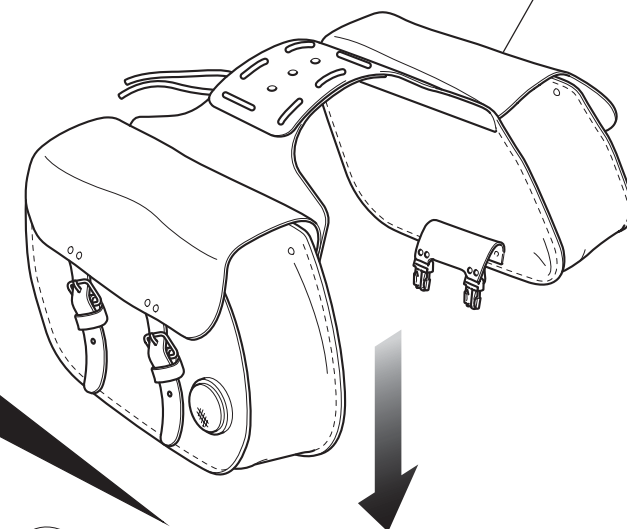
10. Install the throw-over saddlebag as shown.

SADDLEBAG

Route the leather strap through the belt and tie it as shown.

BELT

LEATHER STRAP

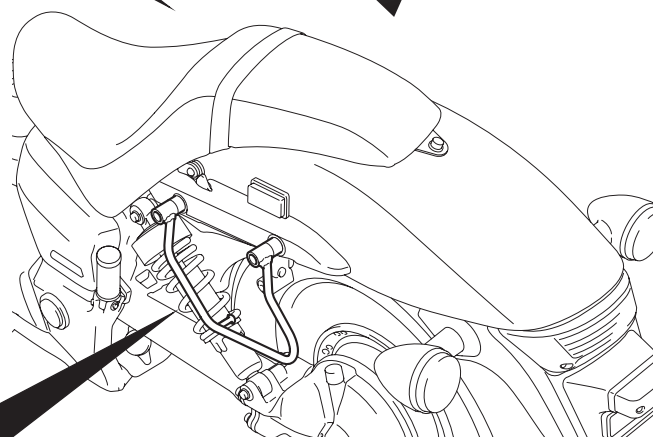


Bottom view:

Secure to the support rod as shown.

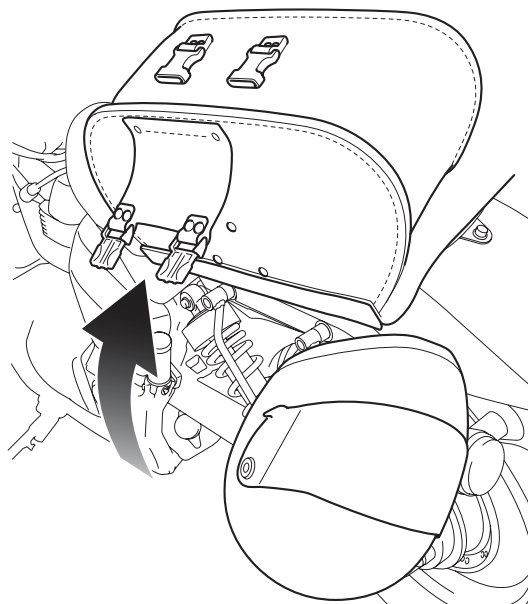
LEFT SUPPORT ROD

FRONT



Attach the helmet to the holder as shown.

- Unhook the buckles to attach the helmet to the holder.



- Lower the saddlebag with care to avoid damaging the helmet.

NOTE: To avoid resting the saddlebag against the helmet, use a helmet lock extension cable.
(P/N 77236-KAZ-780)

