

# HONDA

## INSTALLATION INSTRUCTIONS

Accessory

SADDLEBAG  
P/N 08L70-MGZ-A80

Application

COMMON

Publication No.

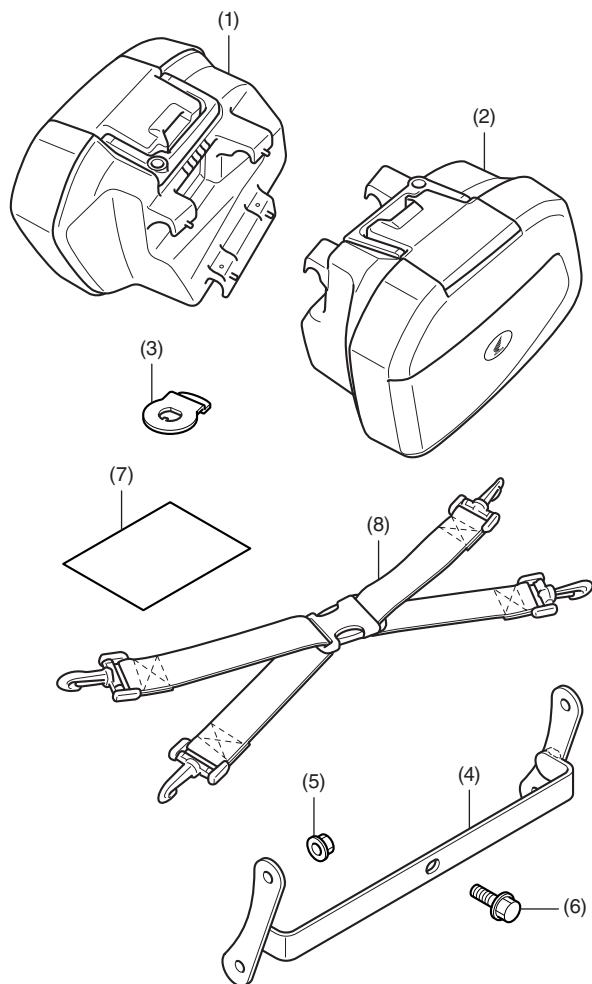
MII 15802

Issue Date

March 2016

**Honda Dealer: Please give a copy of these instructions to your customer.**

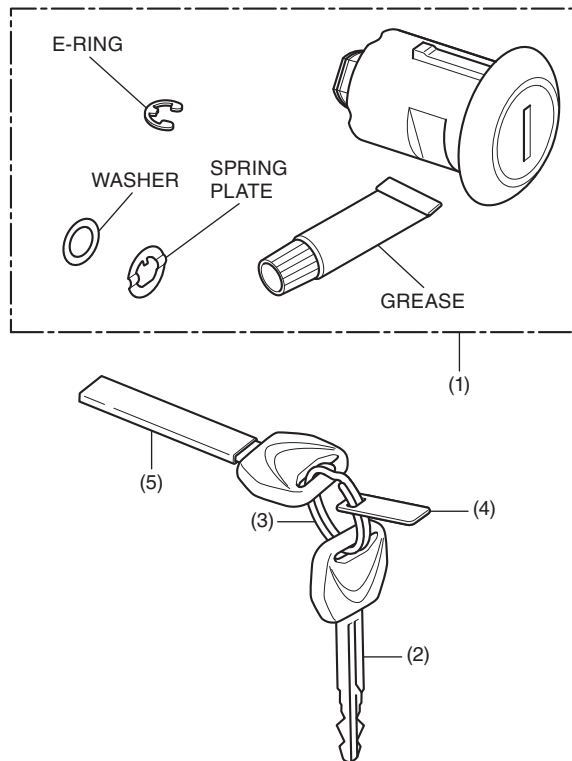
### PARTS LIST



No.	Description	Qty
(1)	Right saddlebag	1
(2)	Left saddlebag	1
(3)	Key lock plate	2
(4)	Reflector stay	1
(5)	6 mm flange nut	2
(6)	6 mm flange bolt	3
(7)	Installation Instructions URL	1
(8)	Luggage band	2

### SADDLEBAG KEY SET

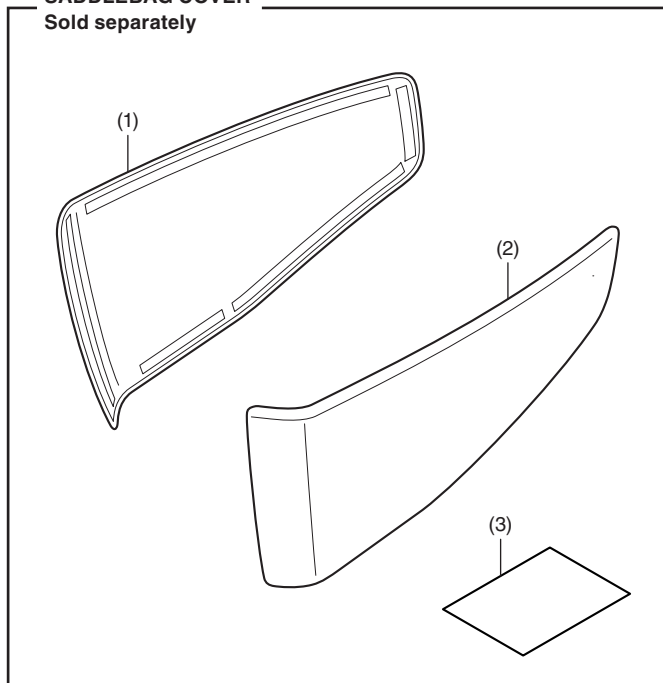
Sold separately



No.	Description	Qty
(1)	Key cylinder	2
(2)	Key	2
(3)	Key tie	1
(4)	Key number plate	1
(5)	Tube	1

### SADDLEBAG COVER

Sold separately



No.	Description	Qty
(1)	Right saddlebag cover	1
(2)	Left saddlebag cover	1
(3)	Installation Instructions URL	1

### SADDLEBAG STAY

Sold separately

- These are necessary depending on model, and the kit is different for each model.

## TOOLS AND SUPPLIES REQUIRED

Socket (10 mm)

Ratchet

Open-end wrench (10 mm)

Long nose pliers

Isopropyl alcohol

Shop towel

Torque wrench

## TORQUE CHART

Tighten all screws, bolts, and nuts to their specified torque values. Refer to the Service Manual for the torque values of the removed parts.

Item	N·m	kgf·m	lbf·ft
6 mm flange bolt and nut	12	1.2	9

## MAXIMUM LOADING CAPACITY

- The weight of the cargo must not exceed the following maximum loading capacity:

Maximum Loading Capacity	
Right saddlebag	8.8 lb (4.0 kg)
Left saddlebag	8.8 lb (4.0 kg)

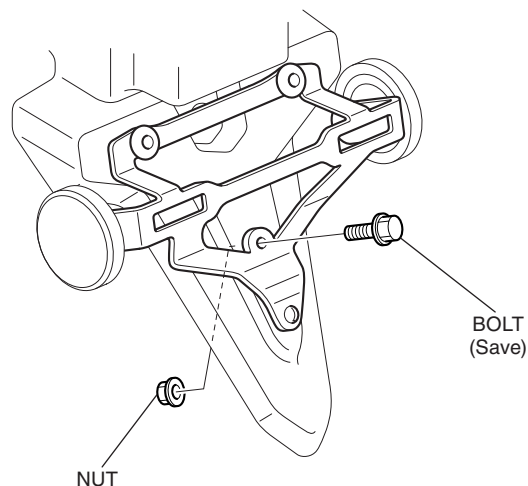
## INSTALLATION

### ▲ CAUTION

- To prevent burns, allow the engine, exhaust system, radiator, etc., to cool before installing the accessory.

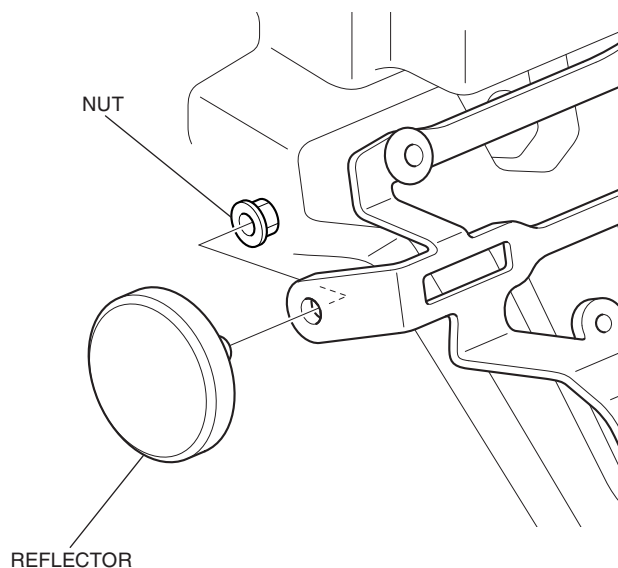
1. Remove the bolt and nut.

<Rear side>

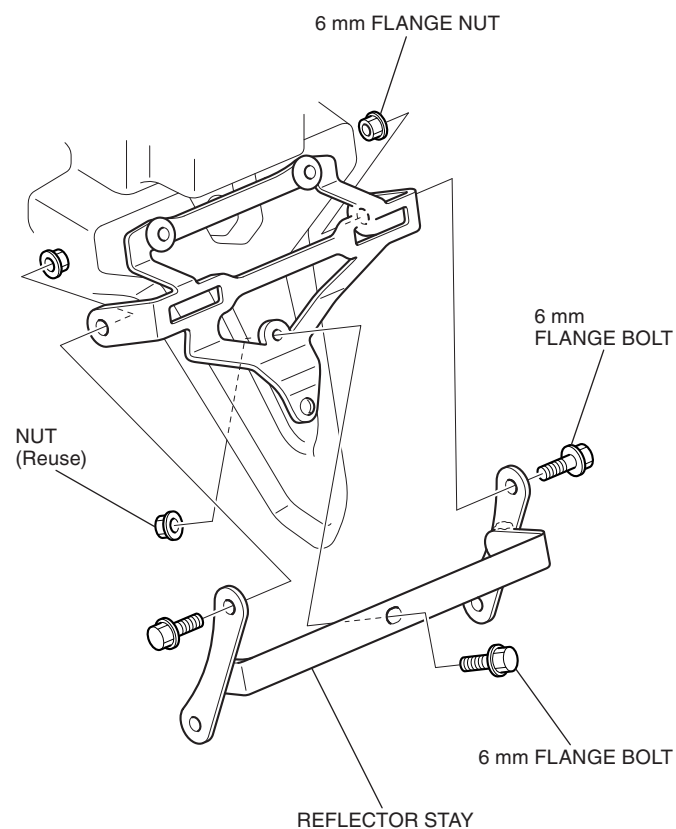


2. Remove the reflector as shown.

- Repeat on the right side.

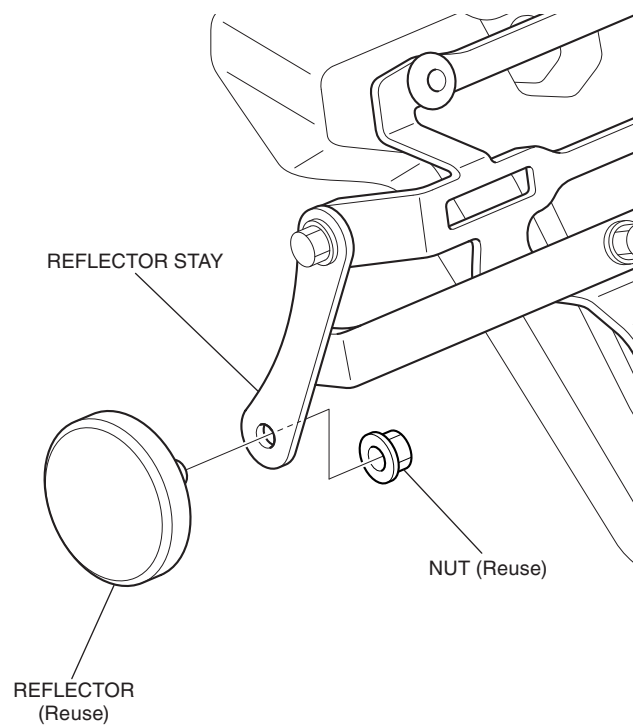


3. Install the reflector stay as shown.

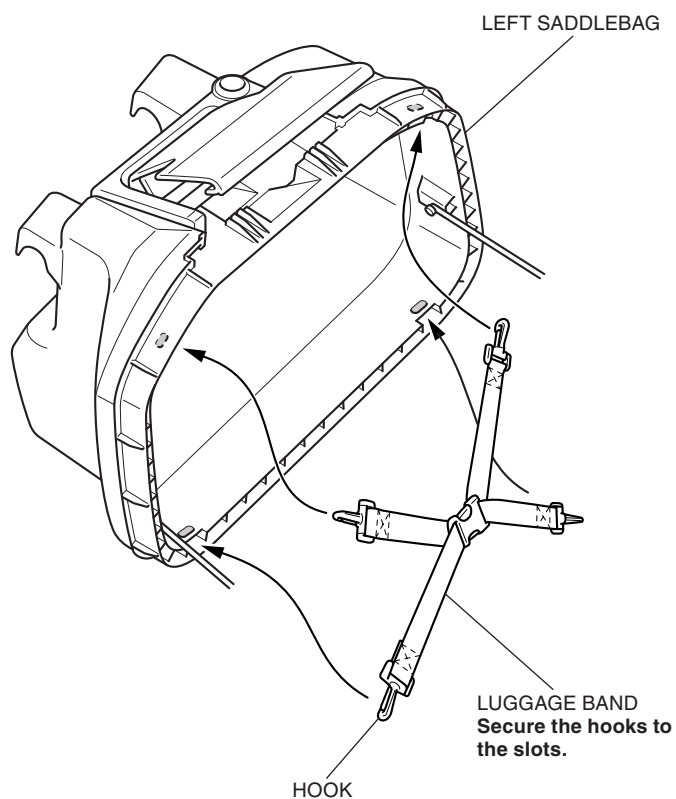


4. Install the reflector as shown.

- Repeat on the right side.



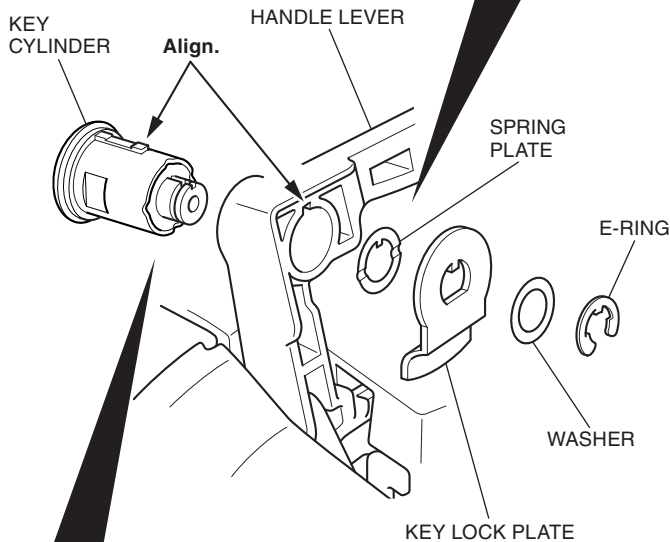
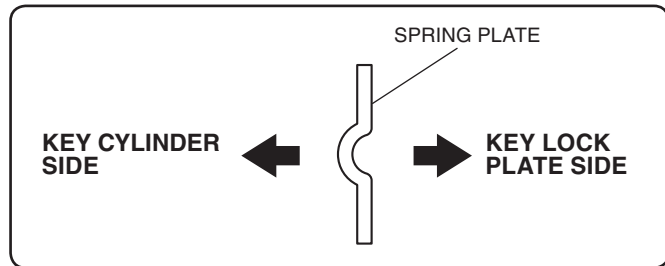
5. Install the luggage band as shown.



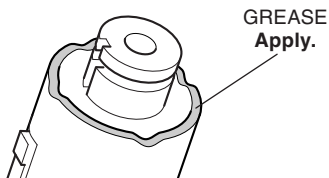
6. Repeat on the right side.

7. Install the key cylinder (sold separately) on each saddlebag as shown.

- **Only use the supplied grease.**



**Apply grease to the shaded area.**



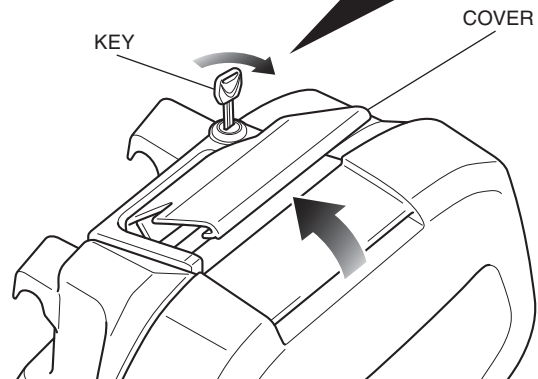
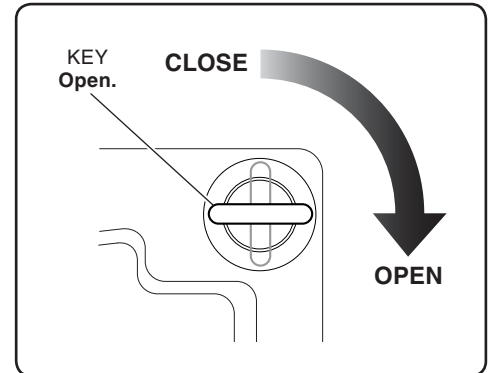
## FOR USE OF THE SADDLEBAGS

### ⚠ CAUTION

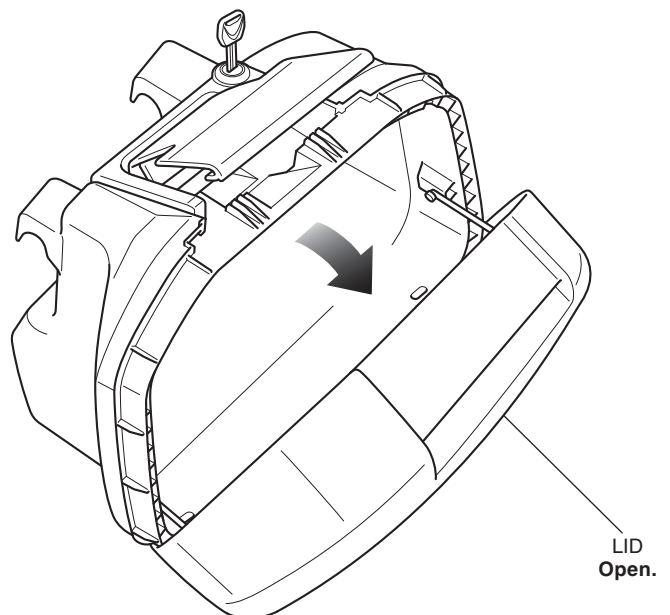
- To prevent burns, allow the engine, exhaust system, radiator, etc., to cool before installing and removing the accessory.

### How to Open the Saddlebags

1. Install the key. Release the lock by turning the key clockwise and lift the latch as shown.



2. Open the lid as shown.

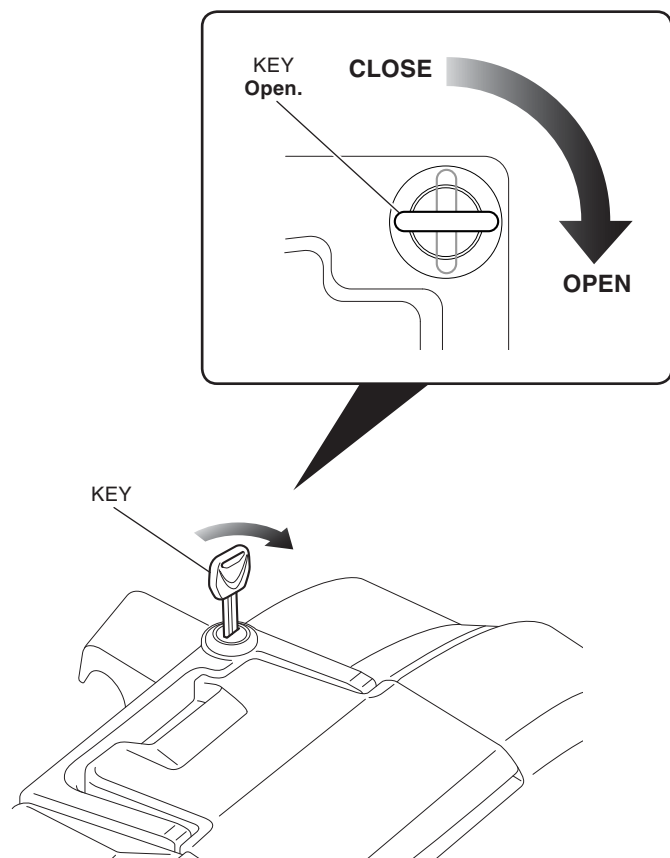


### How to Close the Saddlebags

1. Close and lock the saddlebags in the reverse order of opening.

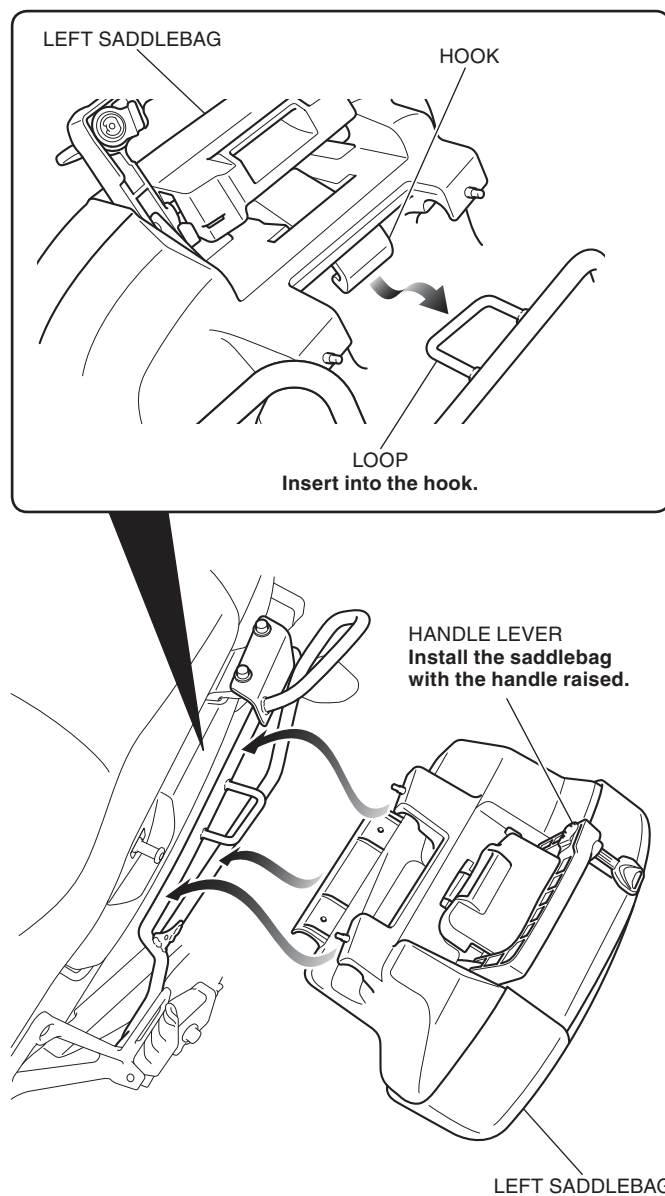
## How to Install the Saddlebags

1. Install the key. Release the lock by turning the key clockwise.



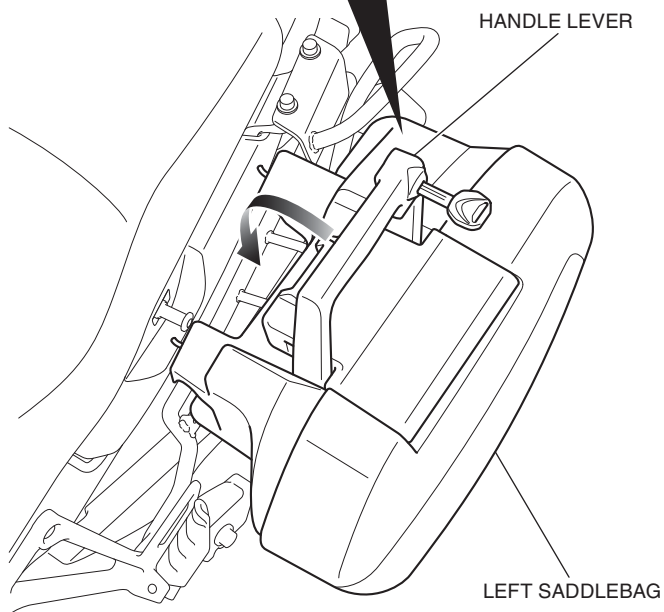
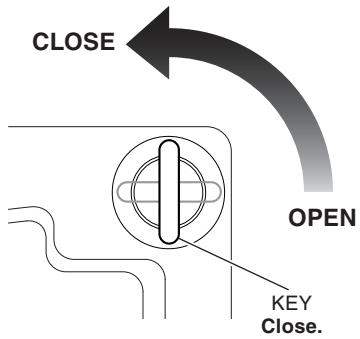
2. Install the left saddlebag as shown.

<Left side>



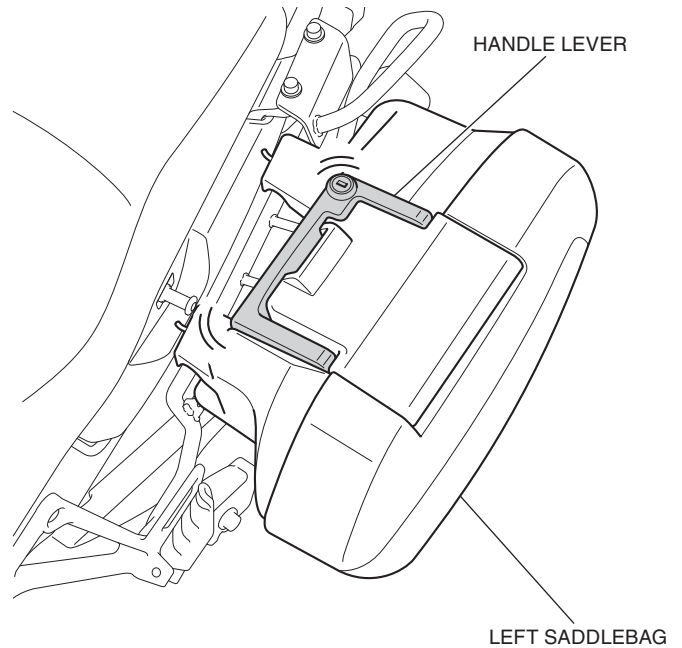
3. Lower the handle lever and lock the left saddlebag by turning the key counterclockwise as shown.

Turn the key counterclockwise after lowering the handle lever.



4. Remove the key. Be sure that the handle lever cannot be released and the left saddlebag is installed securely.

- The saddlebag can come off during riding unless it is mounted securely.



5. Repeat on the right side.

### How to Remove the Saddlebags

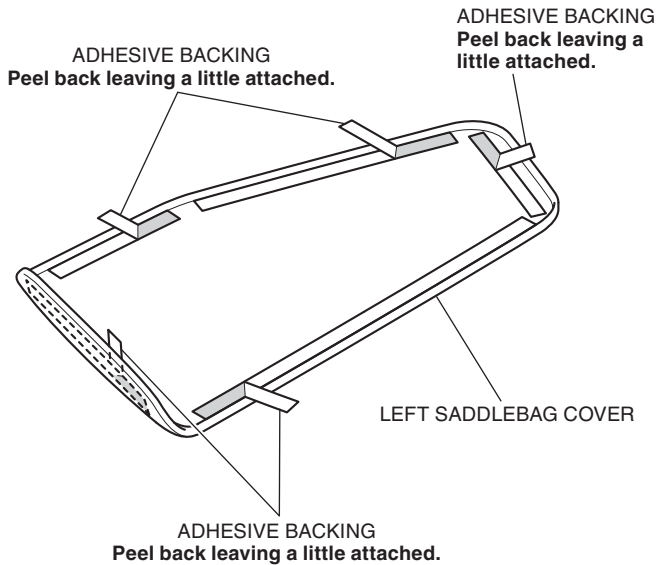
1. Remove the saddlebags in the reverse order of installation.

## How to Install the Saddlebag Covers

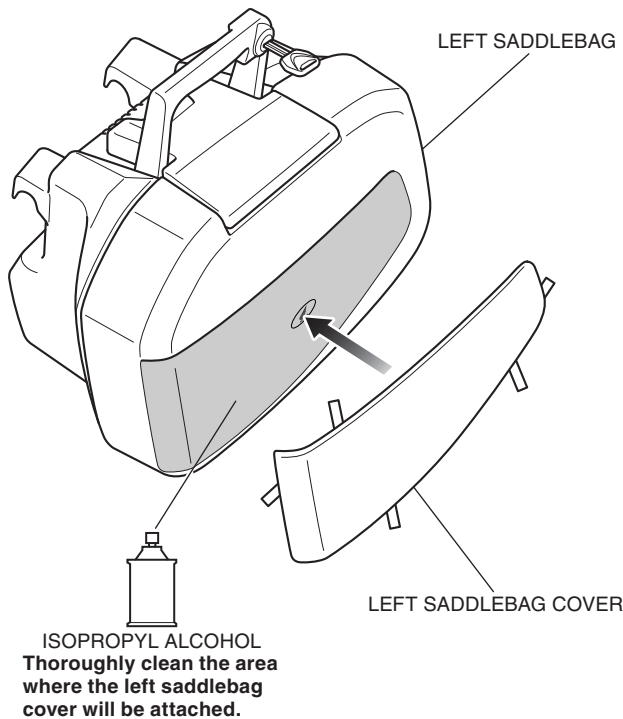
### NOTE:

- Heat the bonding surfaces with a hair dryer if the ambient air temperature is below 70°F (21°C).
- The adhesive reaches full strength in 72 hours. Wait at least 24 hours before riding the motorcycle.

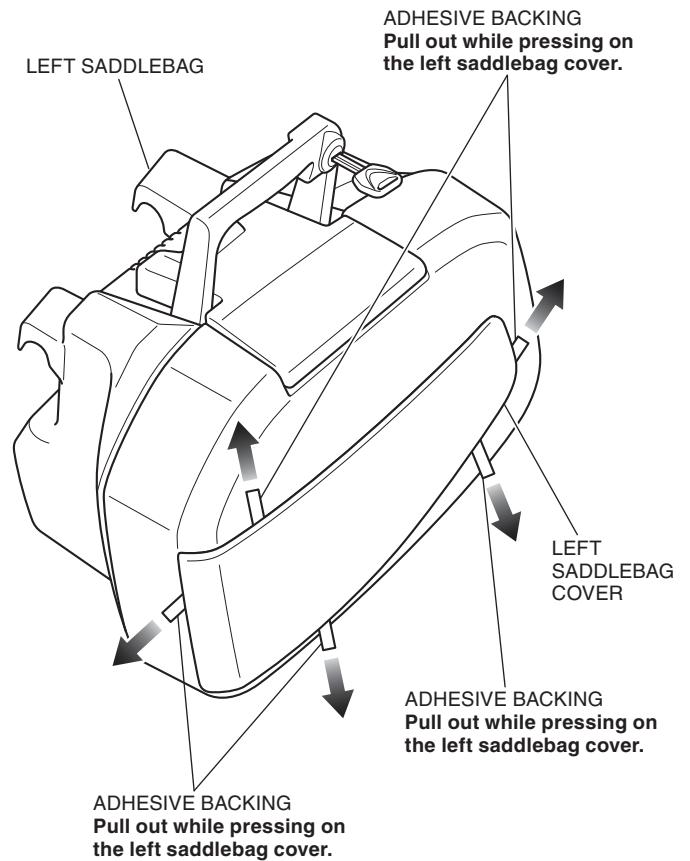
1. Remove the left saddlebag.
2. Peel back an end of the adhesive backings on the left saddlebag cover as shown.



3. Loosely install the left saddlebag cover as shown.



4. Install the left saddlebag cover securely as shown.



5. Apply adequate pressure to the attached left saddlebag cover.
6. Repeat on the right side.