

HONDA

INSTALLATION INSTRUCTIONS

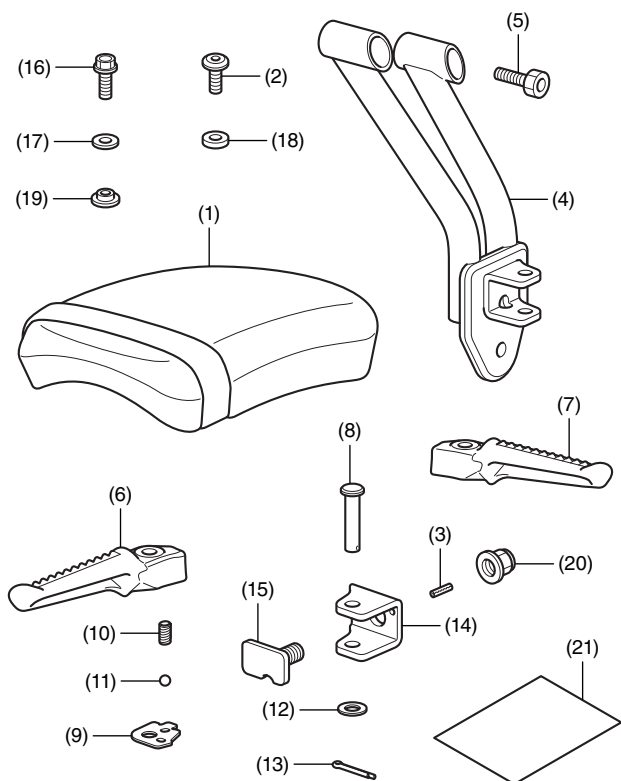
Accessory
PASSENGER SEAT
P/N 08R73-K87-A00

Application
CMX500/A
CMX300/A

Publication No.
MII 16241
Issue Date
April 2017

Honda Dealer: Please give a copy of these instructions to your customer.

PARTS LIST



No.	Description	Qty
(1)	Passenger seat	1
(2)	8 mm socket bolt (short)	1
(3)	Roll pin	1
(4)	Left peg holder	1
(5)	8 mm socket bolt (long)	2
(6)	Right foot peg	1
(7)	Left foot peg	1
(8)	Joint pin	2
(9)	Click plate	2
(10)	Spring	2
(11)	Steel ball	2
(12)	8 mm washer (thin)	2
(13)	Split pin	2
(14)	Peg bracket	1
(15)	Peg bracket bolt	1
(16)	8 mm flange bolt	1
(17)	8 mm washer (medium)	1
(18)	8 mm washer (thick)	1
(19)	Collar	1
(20)	10 mm self-lock nut	1
(21)	Installation Instruction URL	1

TOOLS AND SUPPLY REQUIRED

Socket (12 mm)
Ratchet
Box-end wrench (17 mm)
Hex wrench (6 mm)
Long nose pliers
Plastic hammer
Grease
Torque wrench

TORQUE CHART

Tighten all screws, bolts, and nuts to their specified torque values. Refer to the Service Manual for the torque values of the removed parts.

Item	N-m	kgf-m	lbf-ft
8 mm socket bolt (short)	22	2.2	16
8 mm socket bolt (long)	33	3.3	24
8 mm flange bolt	27	2.8	20
10 mm self-lock nut	39	4.0	29

USER SAFETY

Do not carry a passenger unless a passenger seat with grab strap and foot pegs have been securely installed on your motorcycle.

▲ WARNING

Carrying a passenger without a properly designed and installed passenger seat and foot pegs can result in serious injury or death to you and/or the passenger.

Never carry a passenger without first installing a passenger seat (with grab strap) and foot pegs specifically designed for this motorcycle. Further, never carry more than one passenger.

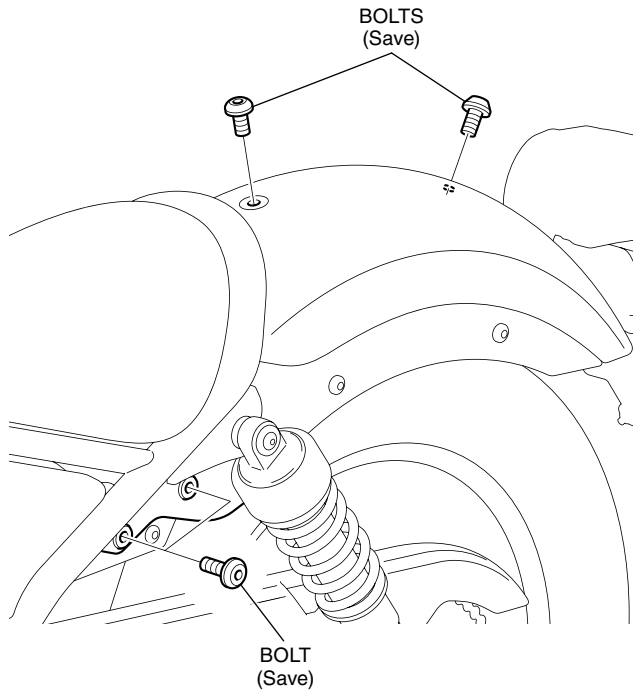
INSTALLATION

⚠ CAUTION

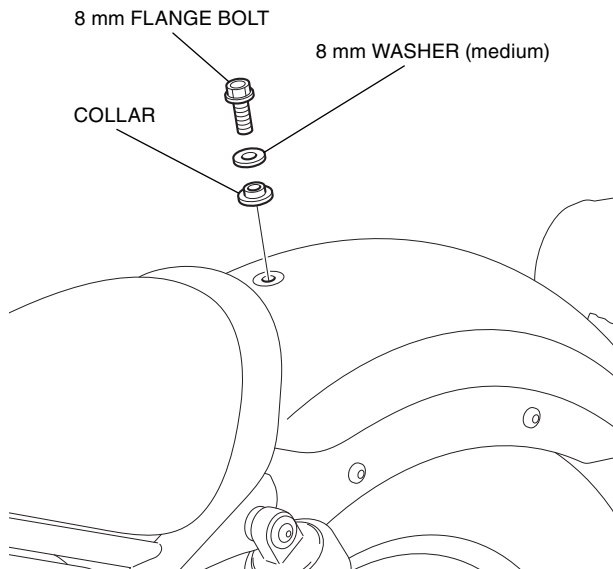
- To prevent burns, allow the engine, exhaust system, radiator, etc. to cool before installing the accessory.

NOTE:

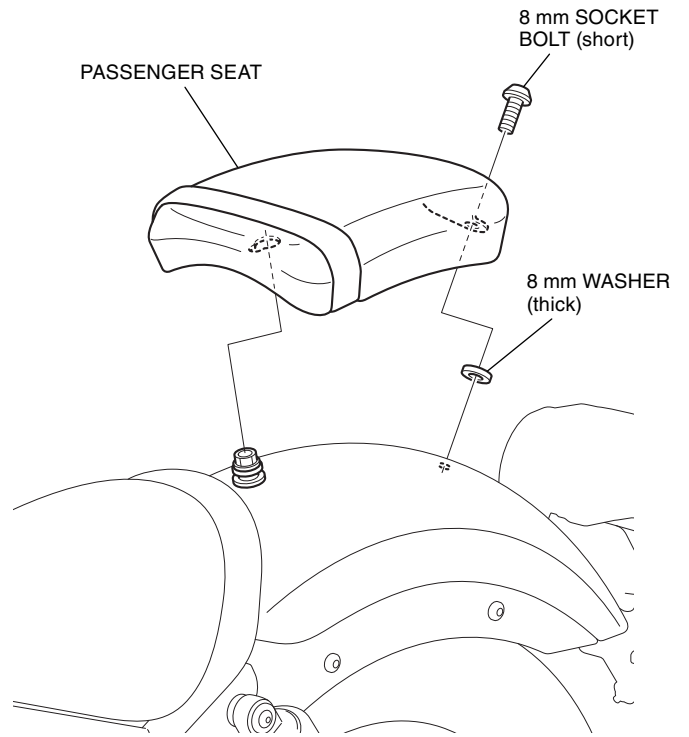
- Take care not to damage the painted surfaces of the motorcycle.
1. Refer to the Service Manual for the motorcycle, remove the bolts as shown.



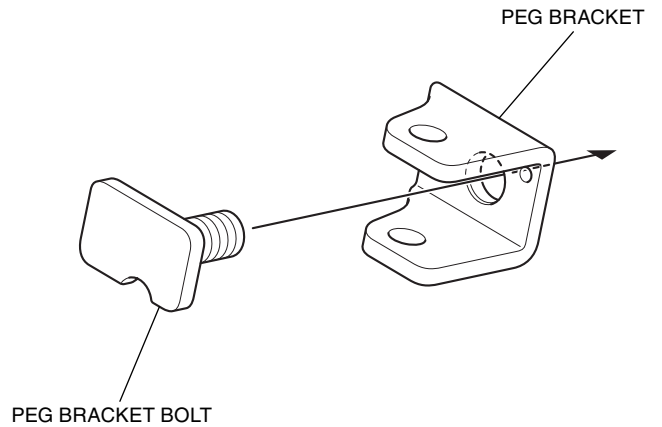
2. Install the collar, 8 mm medium washer and bolt as shown.




3. Install the hardware and passenger seat as shown.

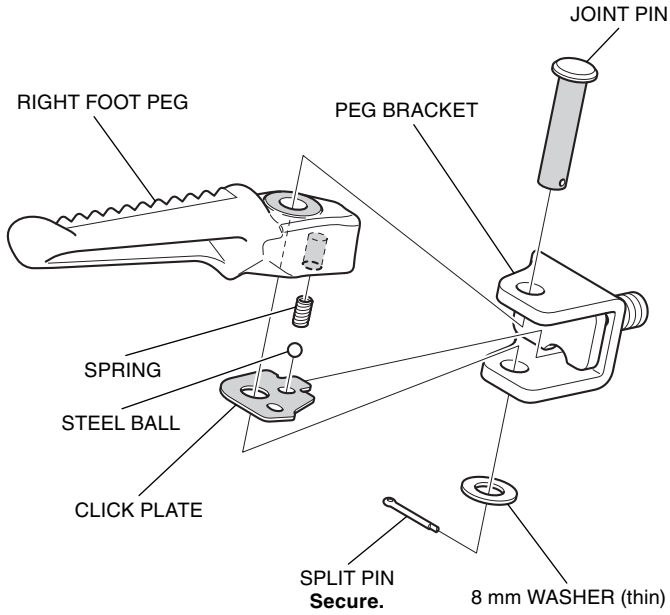


4. Install the peg bracket bolt as shown.

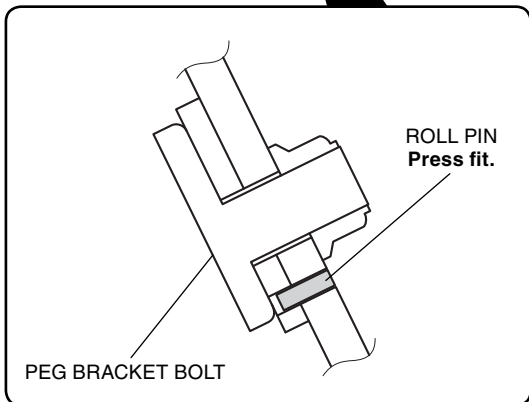
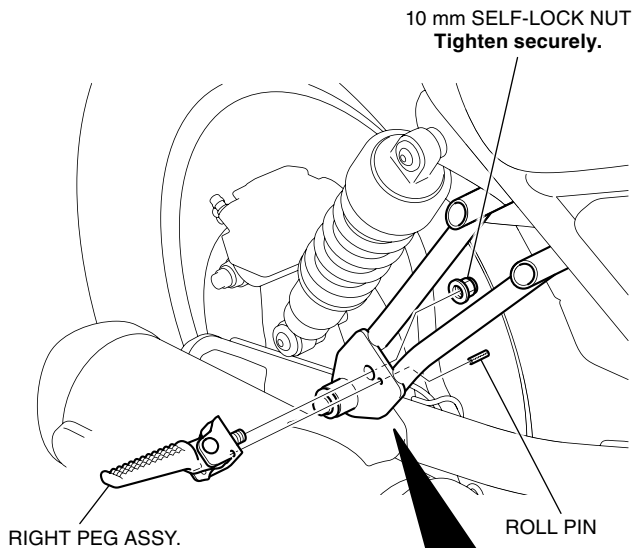


5. Assemble the right passenger peg as shown.

- Apply grease to the  areas.

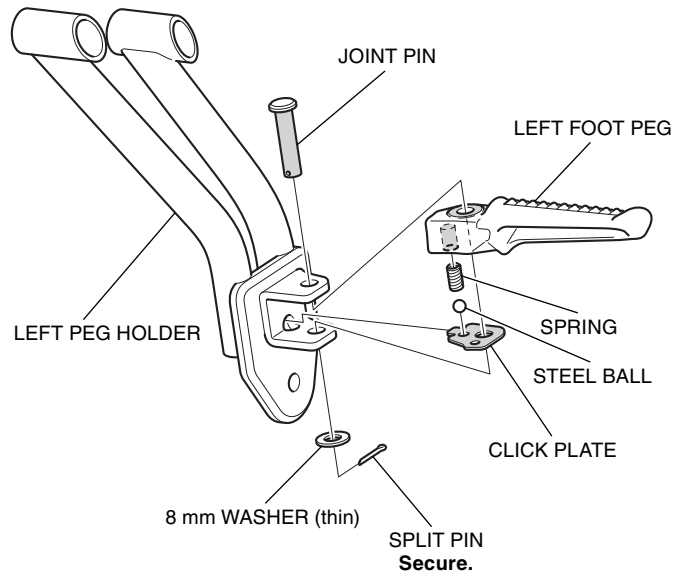


6. Install the right passenger peg assembly as shown.



7. Install the left passenger peg to the left peg holder as shown.

- Apply grease to the  areas.



8. Install the left passenger peg holder assembly as shown.

