

HONDA

INSTALLATION INSTRUCTIONS

Accessory

REAR CARRIER A
P/N 08L70-MGZ-D00

Application

CBR500R/RA
CB500F/FA

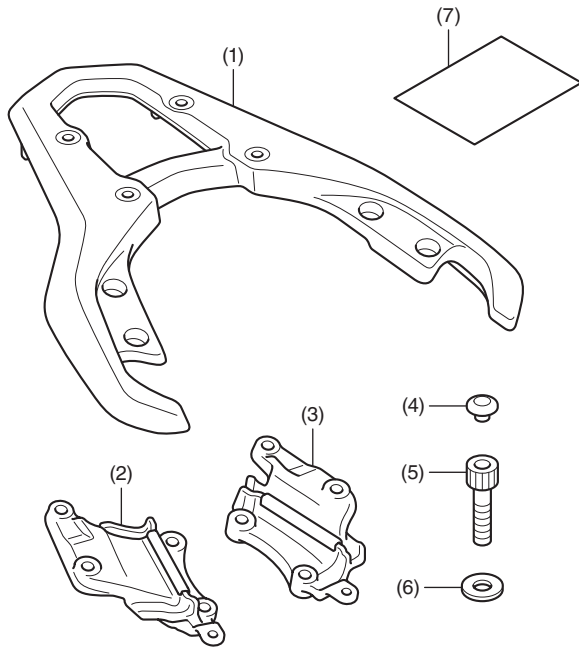
Publication No.

MII

Issue Date

January 2013

PARTS LIST



No.	Description	Qty
(1)	Rear carrier A	1
(2)	Right carrier stay	1
(3)	Left carrier stay	1
(4)	Cap	4
(5)	8 mm socket bolt	4
(6)	Washer	4
(7)	URL paper	1

TOOLS REQUIRED

Hex wrench (8 mm)
Torque wrench

TORQUE CHART

Tighten all screws, bolts, and nuts to their specified torque values. Refer to the Service Manual for the torque values of the removed parts.

Item	N-m	kgf-m	lbf-ft
8 mm socket bolt	22	2.2	16

INSTALLATION

▲ CAUTION

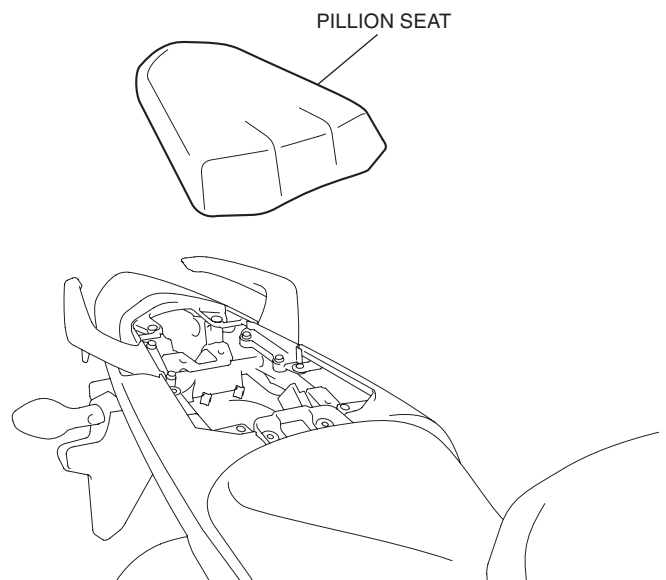
- To prevent burns, allow the engine, exhaust system, radiator, etc., to cool before installing the accessory.

NOTE:

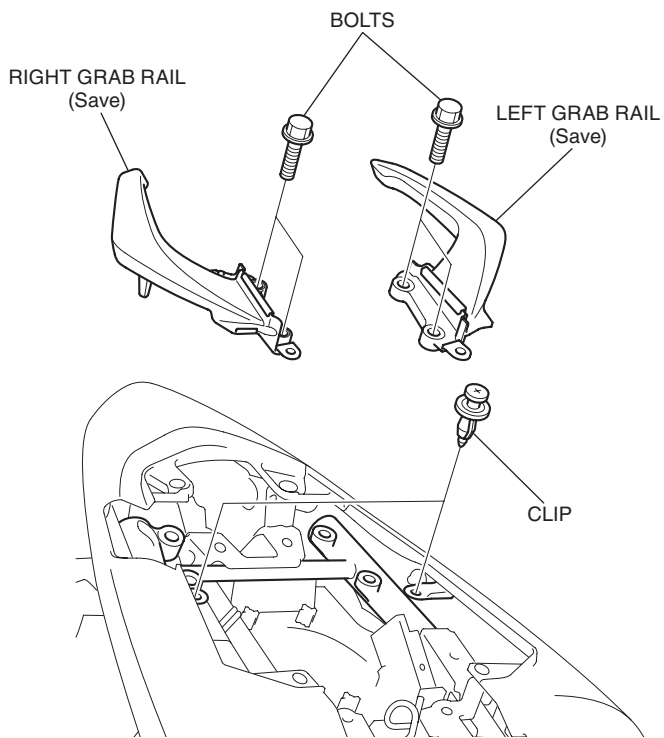
- Take care not to damage the painted surfaces of the motorcycle.
- Reinstall the removed parts on the motorcycle and make sure that wires and harnesses are not pinched.

- Illustration shows CBR500RA type, other types are similar.

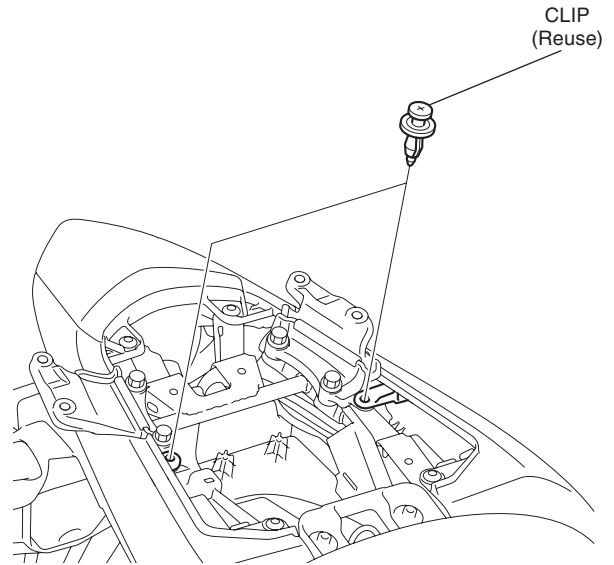
- Refer to the Service Manual for the motorcycle, remove the motorcycle parts.



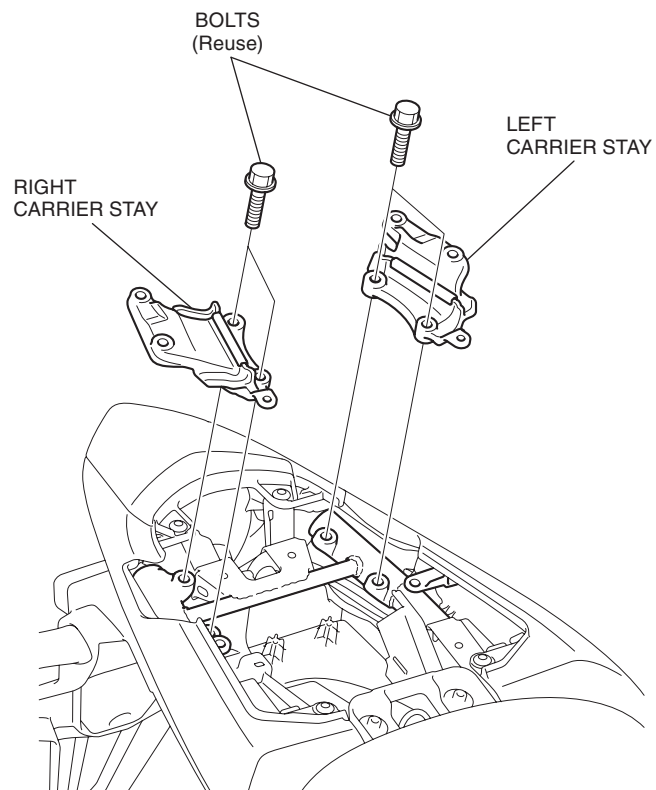
2. Refer to the Service Manual for the motorcycle, remove the motorcycle parts.



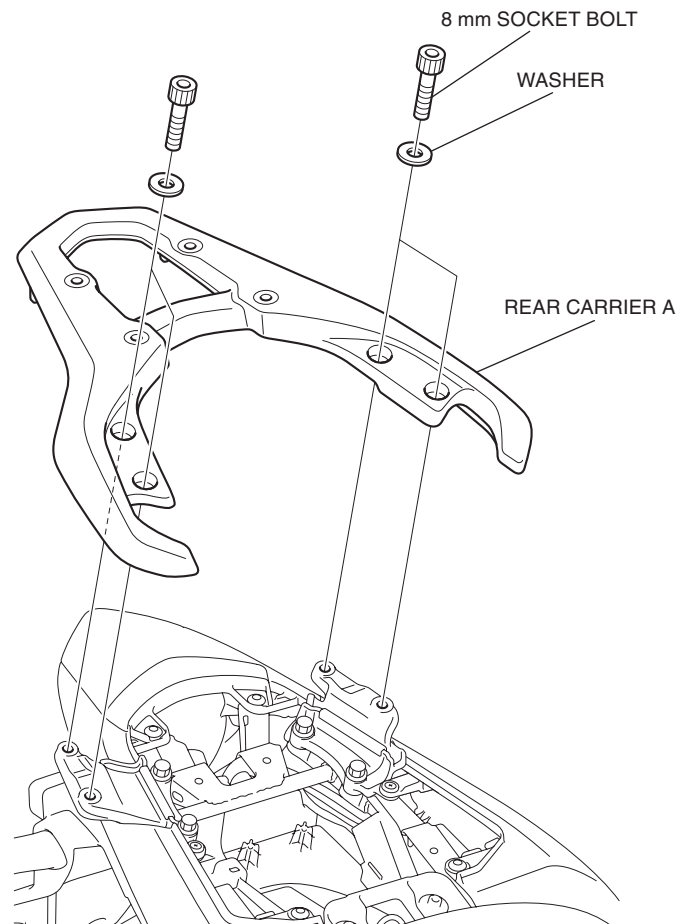
4. Install the clips as shown.



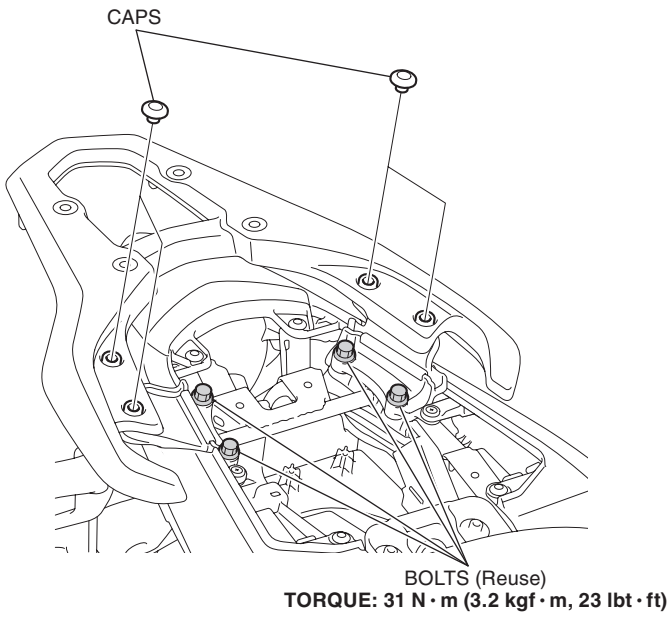
3. Loosely install the carrier stays as shown.



5. Install the rear carrier A as shown.



6. Install the caps as shown.
 - **Tighten the loosely installed hardware to the specification.**



7. Install the motorcycle's parts in the reverse order of removal.