

HONDA

INSTALLATION INSTRUCTIONS

Accessory

METER COVER
P/N 08F91-MGZ-J40

Application

CB500F/FA

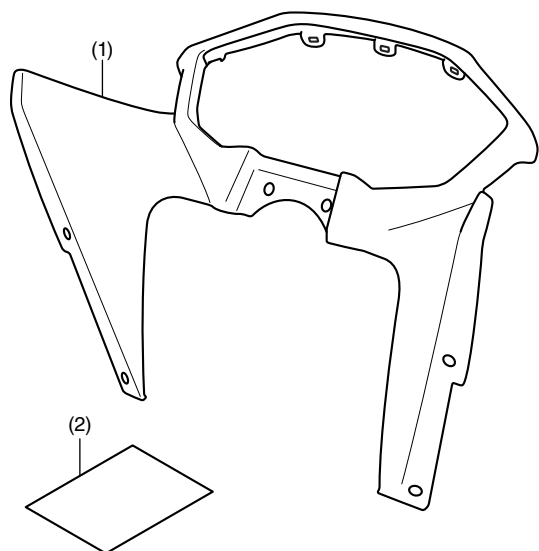
Publication No.

MII 14448

Issue Date

February 2013

PARTS LIST



No.	Description	Qty
(1)	Meter cover	1
(2)	Installation Instruction URL	1

TORQUE INFORMATION

Refer to the Service Manual for the torque values of the removed parts.

INSTALLATION

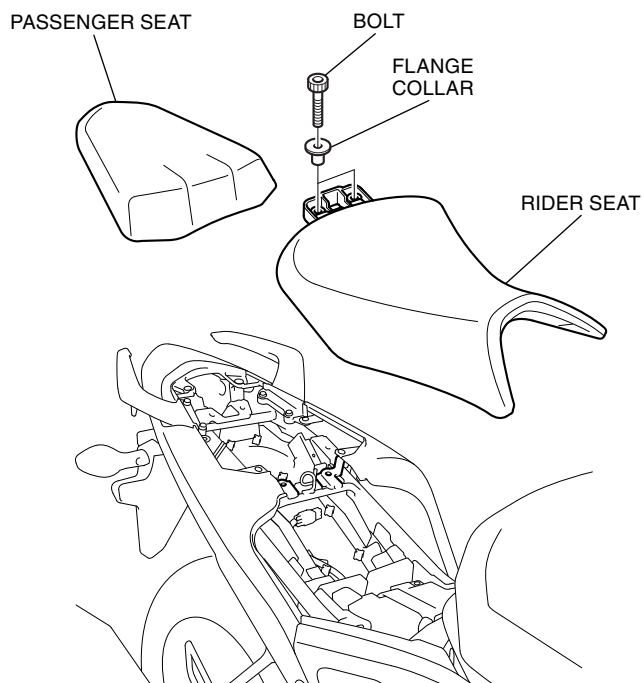
⚠ CAUTION

- To prevent burns, allow the engine, exhaust system, radiator, etc., to cool before installing the accessory.

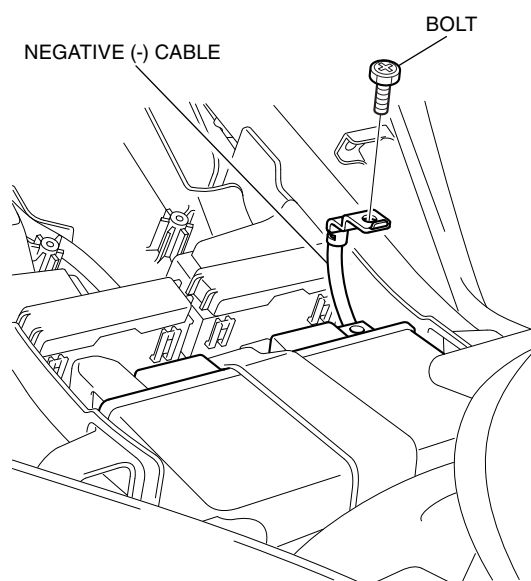
NOTE:

- Take care not to damage the painted surfaces of the motorcycle.
- Reinstall the removed parts on the motorcycle and make sure that wires and harnesses are not pinched.
- Disconnect the negative (-) cable from the battery before installing this accessory.
- The memory of the trip meter will be erased and the clock will stop when the battery is disconnected. After reconnecting the battery, refer to the motorcycle Owner's Manual and reset the clock.

- Refer to the Service Manual for the motorcycle, remove the seats.



- Disconnect the negative (-) cable from the battery as shown.



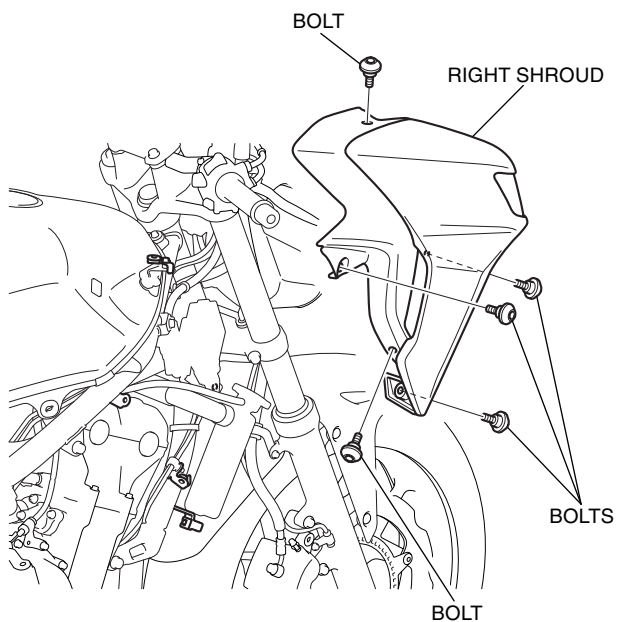
3. Refer to the Service Manual for the motorcycle, remove the right and left side covers.

- Repeat on the left side.

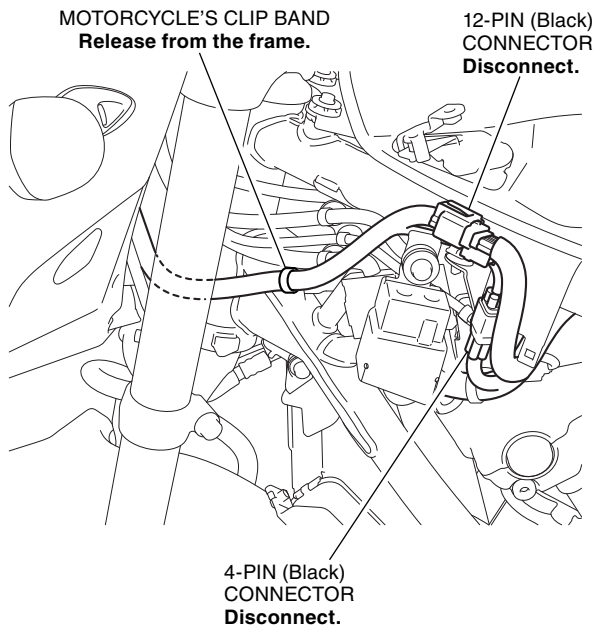


4. Refer to the Service Manual for the motorcycle, remove the right and left shrouds.

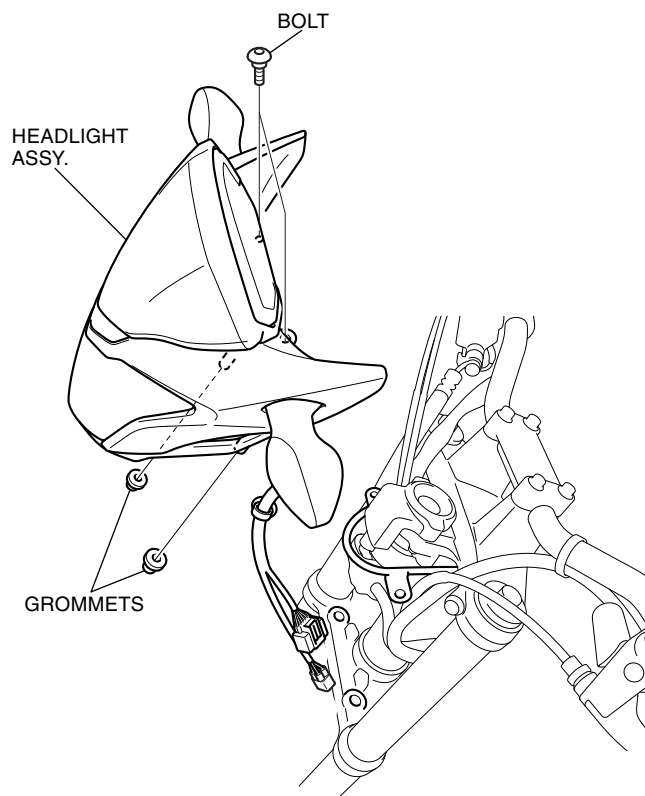
- Repeat on the left side.



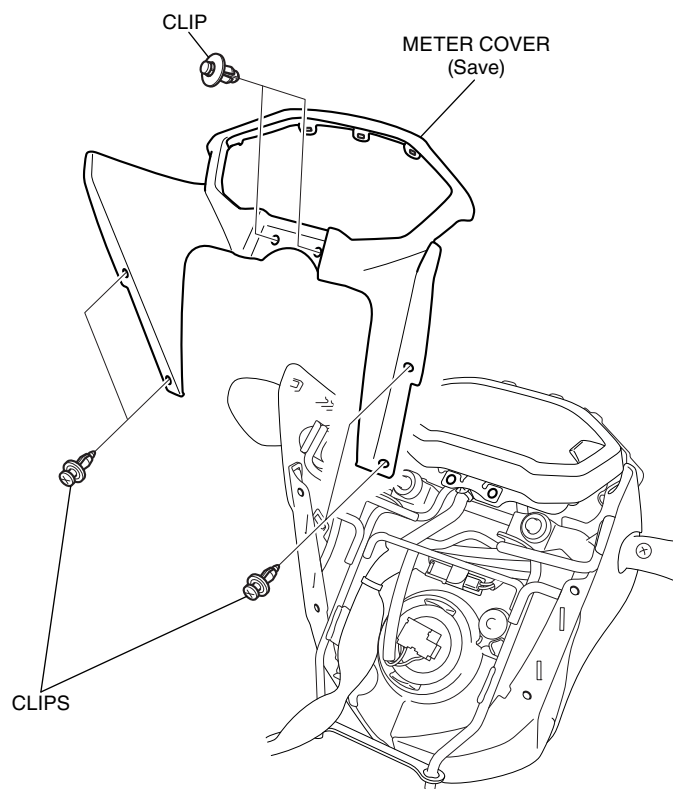
5. Disconnect the connectors and release the motorcycle's harness as shown.



6. Refer to the Service Manual for the motorcycle, remove the headlight assembly.



7. Remove the existing meter cover as shown.



8. Install the accessory meter cover in the reverse order of removal.
9. Install the motorcycle's parts in the reverse order of removal.